

Appendix A

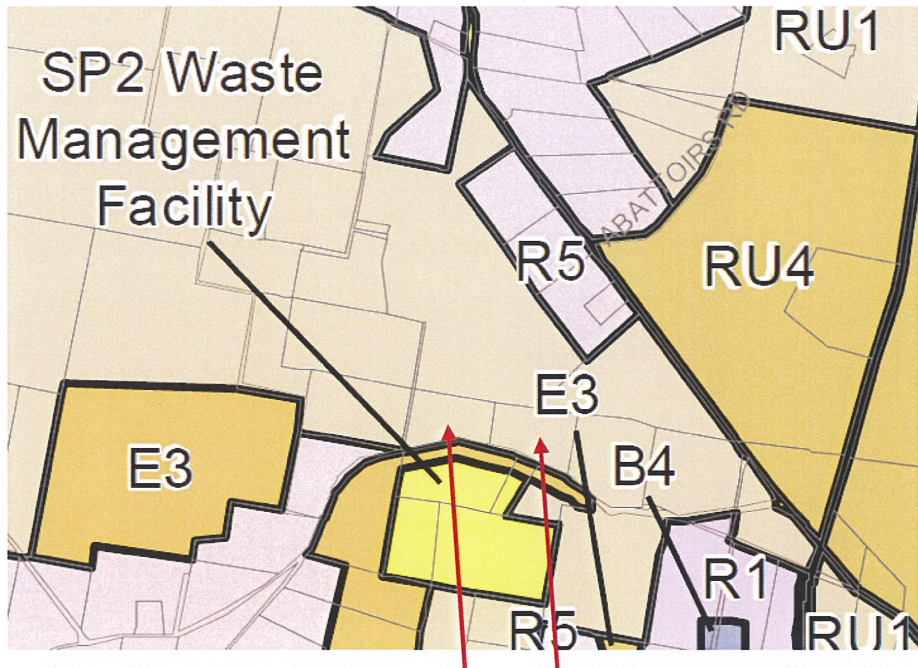
Aerial Map

Current Zoning Map (Mid-Western Regional LEP 2012)

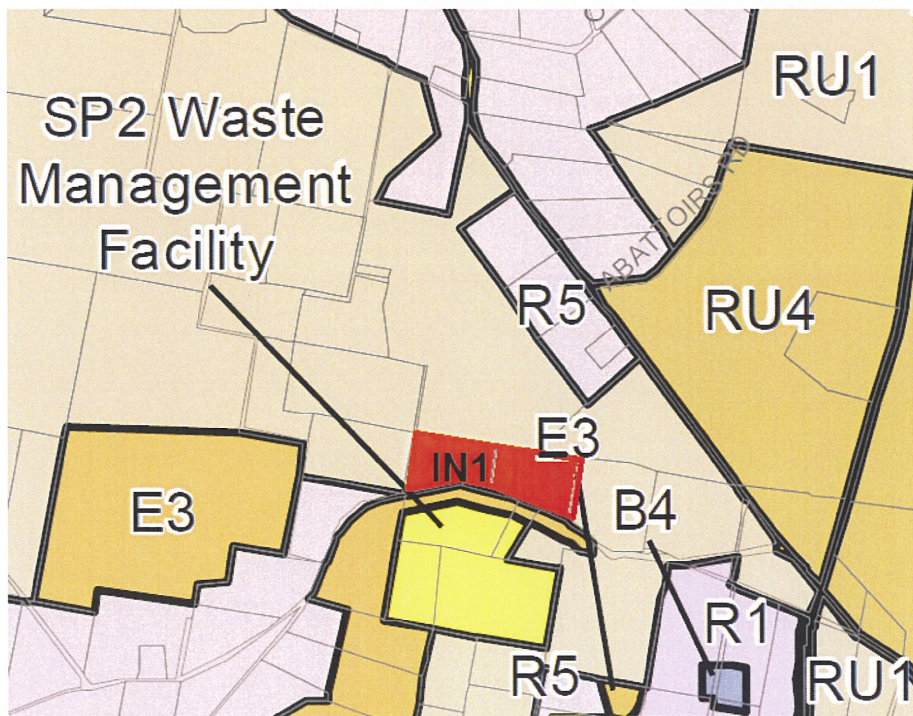
Preferred Zoning Map



aerial locality cadastre and subject land: Lots 16 & 17 DP756897 Hill End Road



Map 2a - Extract of land zoning map (Mid-Western Regional Local Environmental Plan 2012)
subject land as indicated is colour keyed zone RU1 - General Rural

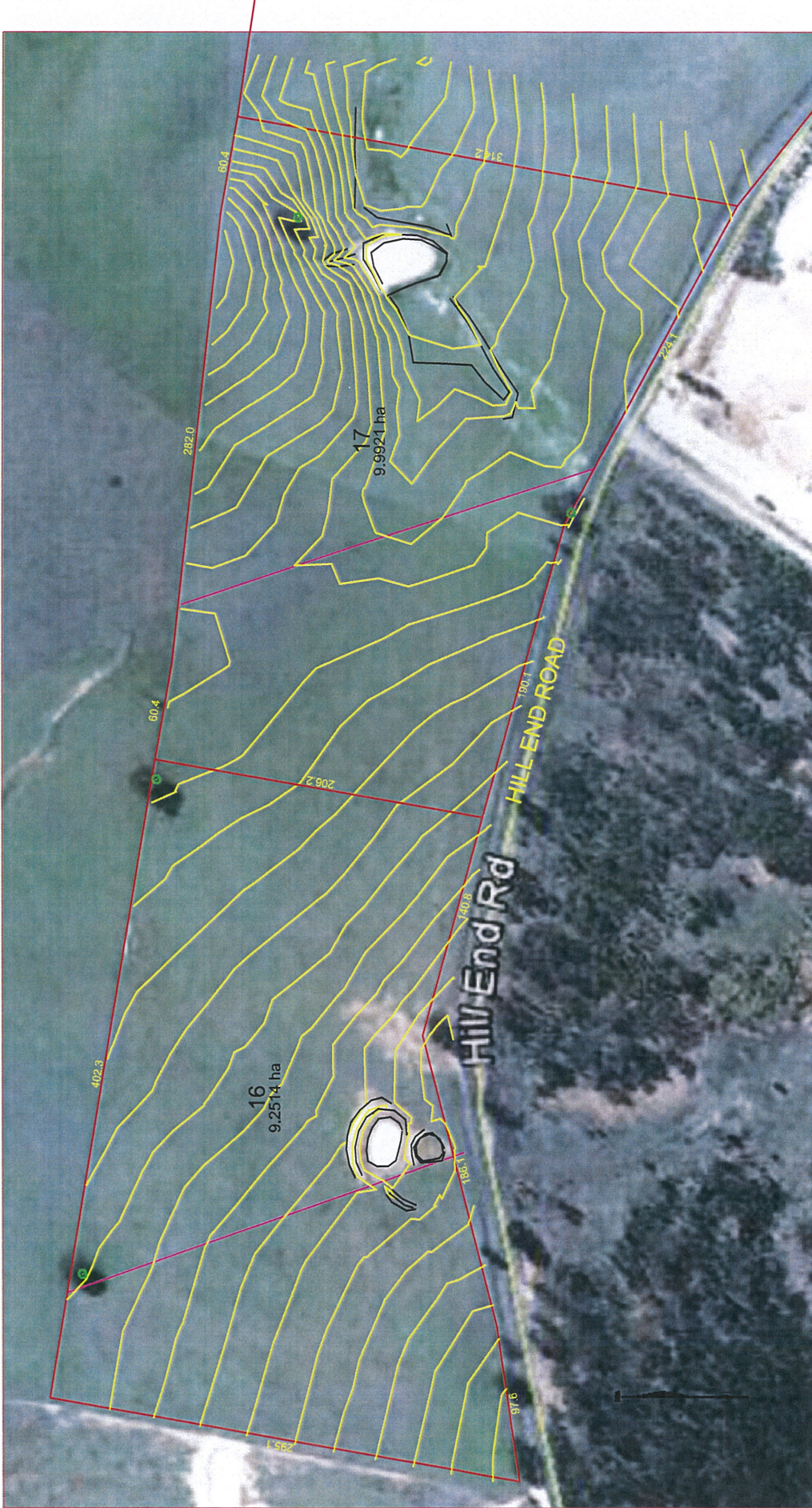


Map 2b - Extract of land zoning map (Mid-Western Regional Local Environmental Plan 2012)
subject land as land indicated **IN1** proposed for rezoning to IN1 - General Industrial

Appendix B

Concept Plan of Industrial Subdivision

Bushfire Prone Land Map



EXISTING PLAN OF SUBDIVISION
 SCALE 1:1000
 CONTOUR INTERVAL 1.0m

Offices Located
 Dubbo, Mudgee, Parkes & Bathurst
Contact Us
 t 1300 134 657
 e generalenquiries@barnson.com.au
 w www.barnson.com.au



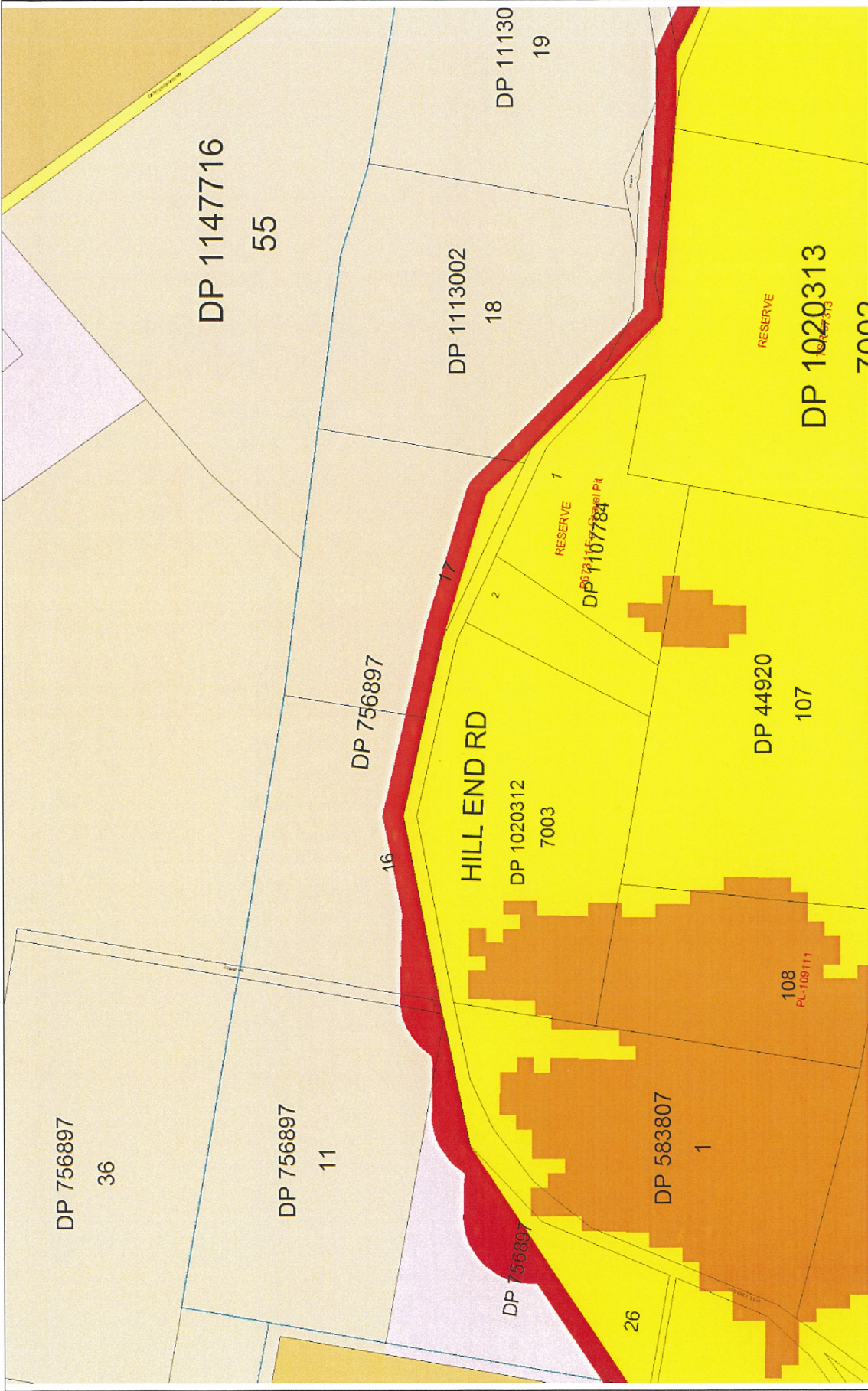
Clients ADAM WOODS
Project LANDS - LOTS 16 & 17 DP756807
 AT HILL END ROAD
 MUDGEE

Drawing Title:
 EXISTING PLAN OF SUBDIVISION

Design	Drawn	Rev	Date	Amendment	Certification
Check DJ	QA UK	ISSUED FOR APPROVAL			
Drawing Sheet	UK				
<small>This drawing has been prepared by Barnson Pty Ltd (Barnson) for the client. It is the property of Barnson Pty Ltd and is not to be used for any other purpose without the written consent of Barnson Pty Ltd. All rights reserved. © Barnson Pty Ltd 2020. All other rights reserved.</small>					

Drawing Number
 19196_LD01

Revision
 A



Map Scale: 1:5,806

Disclaimer
 This map was created for the purpose of showing basic locality information over Mid-Western Regional Council Property boundary information. The map data is supplied by Department of Lands.
 This map is a representation of the information currently held by Mid-Western Regional Council. While every effort has been made to ensure the accuracy of the product, Council accepts no responsibility for any errors or omissions.

Legend

- Parcel
- Crown Land
- Parish
- Localities
- LGA Boundary
- Forest
- Road
- Railway
- Waterway
- National Park

NORTH

Appendix C

Correspondence

property_no	DT_PROPERTY_CREATED	ADDRESS_LOCALITY	postcode	#SALES	DT_FIRSTSALE	DT_LASTSALE	ZONING
355	Dec 1 2001	MUDGEE		2850	0		2012IN2
834	Dec 1 2001	MUDGEE		2850	0		2012IN2
835	Dec 1 2001	MUDGEE		2850	0		2012IN2
839	Dec 1 2001	MUDGEE		2850	0		2012IN2
840	Dec 1 2001	MUDGEE		2850	1 Mar 2 2011	Mar 2 2011	2012IN2
842	Dec 1 2001	MUDGEE		2850	0		2012IN2
1225	Dec 1 2001	MUDGEE		2850	0		2012IN2
1247	Dec 1 2001	MUDGEE		2850	1 Dec 13 2011	Dec 13 2011	2012IN2
1248	Dec 1 2001	MUDGEE		2850	0		2012IN2
1249	Dec 1 2001	MUDGEE		2850	1 Jul 17 2012	Jul 17 2012	2012IN2
1250	Dec 1 2001	MUDGEE		2850	0		2012IN2
1251	Dec 1 2001	MUDGEE		2850	0		2012IN2
1252	Dec 1 2001	MUDGEE		2850	0		2012IN2
1313	Dec 1 2001	MUDGEE		2850	0		2012IN2
1314	Dec 1 2001	MUDGEE		2850	0		2012IN2
1315	Dec 1 2001	MUDGEE		2850	1 Sep 6 2012	Sep 6 2012	2012IN2
1317	Dec 1 2001	MUDGEE		2850	1 Mar 27 2012	Mar 27 2012	2012IN2
1318	Dec 1 2001	MUDGEE		2850	0		2012IN2
2163	Dec 1 2001	MUDGEE		2850	0		2012IN2
2164	Dec 1 2001	MUDGEE		2850	1 Jan 13 2012	Jan 13 2012	2012IN2
2165	Dec 1 2001	MUDGEE		2850	1 Nov 7 2012	Nov 7 2012	2012IN2
2345	Dec 1 2001	MUDGEE		2850	0		2012B5
2349	Dec 1 2001	MUDGEE		2850	1 May 8 2012	May 8 2012	2012B5
2351	Dec 1 2001	MUDGEE		2850	0		2012B5
2353	Dec 1 2001	MUDGEE		2850	0		2012B5
2354	Dec 1 2001	MUDGEE		2850	0		2012B5
2356	Dec 1 2001	MUDGEE		2850	0		2012IN2
2357	Dec 1 2001	MUDGEE		2850	0		2012IN2
2358	Dec 1 2001	MUDGEE		2850	1 Dec 20 2011	Dec 20 2011	2012IN2
2361	Dec 1 2001	MUDGEE		2850	0		2012IN2
5509	Dec 1 2001	ULAN		2850	0		2012IN3
5966	Dec 1 2001	MUDGEE		2850	1 May 4 2012	May 4 2012	2012IN1

property_no	DT_PROPERTY_CREATED	ADDRESS_LOCALITY	postcode	#SALES	DT_FIRSTSALE	DT_LASTSALE	ZONING
5967	Dec 1 2001	MUDGEE		2850	0		2012IN1
5968	Dec 1 2001	MUDGEE		2850	0		2012IN1
5971	Dec 1 2001	MUDGEE		2850	0		2012IN1
5972	Dec 1 2001	MUDGEE		2850	0		2012B5
5973	Dec 1 2001	MUDGEE		2850	0		2012B5
5974	Dec 1 2001	MUDGEE		2850	0		2012B5
5975	Dec 1 2001	MUDGEE		2850	0		2012B5
5976	Dec 1 2001	MUDGEE		2850	0		2012B5
5977	Dec 1 2001	MUDGEE		2850	0		2012B5
5978	Dec 1 2001	MUDGEE		2850	0		2012B5
5979	Dec 1 2001	MUDGEE		2850	0		2012B5
5980	Dec 1 2001	MUDGEE		2850	0		2012B5
5981	Dec 1 2001	MUDGEE		2850	0		2012B5
5983	Dec 1 2001	MUDGEE		2850	0		2012B5
5984	Dec 1 2001	MUDGEE		2850	0		2012B5
5986	Dec 1 2001	MUDGEE		2850	0		2012B5
5990	Dec 1 2001	MUDGEE		2850	0		2012B5
5991	Dec 1 2001	MUDGEE		2850	0		2012B5
5993	Dec 1 2001	MUDGEE		2850	0		2012B5
5995	Dec 1 2001	MUDGEE		2850	0		2012B5
5996	Dec 1 2001	MUDGEE		2850	0		2012B5
5999	Dec 1 2001	MUDGEE		2850	0		2012B5
6005	Dec 1 2001	MUDGEE		2850	0		2012B5
6006	Dec 1 2001	MUDGEE		2850	0		2012B5
6008	Dec 1 2001	MUDGEE		2850	0		2012B5
6010	Dec 1 2001	MUDGEE		2850	0		2012B5
6015	Dec 1 2001	MUDGEE		2850	0		2012B5
6021	Dec 1 2001	MUDGEE		2850	0		2012IN1
7557	Dec 1 2001	MUDGEE		2850	0		2012IN1
7601	Dec 1 2001	MUDGEE		2850	0		2012B5
7622	Dec 1 2001	MUDGEE		2850	1 Oct 7 2011	Oct 7 2011	2012IN2
7724	Dec 1 2001	MUDGEE		2850	1 Apr 28 2011	Apr 28 2011	2012IN2

property_no	DT_PROPERTY_CREATED	ADDRESS_LOCALITY	postcode	#SALES	DT_FIRSTSALE	DT_LASTSALE	ZONING
7855	Dec 1 2001	MUDGE		2850	0		2012IN1
8149	Dec 1 2001	MUDGE		2850	0		2012IN1
8150	Dec 1 2001	MUDGE		2850	0		2012IN1
8151	Dec 1 2001	MUDGE		2850	0		2012IN1
8154	Dec 1 2001	MUDGE		2850	1	Oct 29 2010	2012IN1
8155	Dec 1 2001	MUDGE		2850	0		2012IN1
8157	Dec 1 2001	MUDGE		2850	0		2012IN1
8158	Dec 1 2001	MUDGE		2850	0		2012IN1
8159	Dec 1 2001	MUDGE		2850	0		2012IN1
8160	Dec 1 2001	MUDGE		2850	0		2012IN1
8162	Dec 1 2001	MUDGE		2850	0		2012IN1
8344	Dec 1 2001	MUDGE		2850	0		2012IN1
8496	Dec 1 2001	MUDGE		2850	0		2012IN1
8658	Dec 1 2001	MUDGE		2850	0		2012B5
9061	Dec 1 2001	MUDGE		2850	1	Mar 5 2010	2012IN1
9062	Dec 1 2001	MUDGE		2850	0		2012IN1
9407	Dec 1 2001	MUDGE		2850	0		2012IN1
9408	Dec 1 2001	MUDGE		2850	0		2012IN1
9693	Dec 1 2001	MUDGE		2850	0		2012IN1
9756	Dec 1 2001	MUDGE		2850	0		2012IN1
9897	Dec 1 2001	MUDGE		2850	0		2012IN2
9988	Dec 1 2001	MUDGE		2850	0		2012IN1
10475	Dec 1 2001	MUDGE		2850	0		2012IN1
10498	Dec 1 2001	MUDGE		2850	0		2012IN2
10519	Dec 1 2001	MUDGE		2850	0		2012IN1
10530	Dec 1 2001	MUDGE		2850	0		2012B5
10531	Dec 1 2001	MUDGE		2850	0		2012B5
10575	Dec 1 2001	MUDGE		2850	0		2012IN1
10823	Dec 1 2001	MUDGE		2850	0		2012IN2
11039	Dec 1 2001	MUDGE		2850	0		2012IN1
11040	Dec 1 2001	MUDGE		2850	1	Jun 28 2010	2012IN1
11151	Dec 1 2001	MUDGE		2850	0		2012B5

property_no	DT_PROPERTY_CREATED	ADDRESS_LOCALITY	postcode	#SALES	DT_FIRSTSALE	DT_LASTSALE	ZONING
11432	Dec 1 2001	MUDGE		2850	0		2012B5
11441	Dec 1 2001	MUDGE		2850	0		2012B5
11600	Dec 1 2001	MUDGE		2850	0		2012B5
11601	Dec 1 2001	MUDGE		2850	0		2012B5
11778	Dec 1 2001	MUDGE		2850	0		2012IN1
11779	Dec 1 2001	MUDGE		2850	0		2012IN1
11994	Dec 1 2001	MUDGE		2850	0		2012IN2
12480	Dec 1 2001	MUDGE		2850	0		2012IN2
12481	Dec 1 2001	MUDGE		2850	0		2012IN2
12801	Dec 1 2001	MUDGE		2850	0		2012B5
12903	Dec 1 2001	MUDGE		2850	0		2012B5
13307	Jul 2 2003	MUDGE		2850	0		2012B5
13308	Jul 2 2003	MUDGE		2850	0		2012B5
13311	Jul 4 2003	MUDGE		2850	0		2012B5
13312	Jul 4 2003	MUDGE		2850	0		2012IN1
13482	Jan 20 2004	BURRUNDULLA		2850	1 Oct 19 2012	Oct 19 2012	2012IN1
13483	Jan 20 2004	BURRUNDULLA		2850	2 Aug 31 2012	Jan 8 2013	2012IN1
13484	Jan 20 2004	BURRUNDULLA		2850	1 Aug 3 2012	Aug 3 2012	2012IN1
13512	Mar 23 2004	BURRUNDULLA		2850	1 Aug 12 2011	Aug 12 2011	2012IN1
18421	Mar 2 2005	MUDGE		2850	0		2012IN1
18422	Mar 2 2005	MUDGE		2850	1 Jan 31 2011	Jan 31 2011	2012IN1
18423	Mar 2 2005	MUDGE		2850	0		2012IN1
18424	Mar 2 2005	MUDGE		2850	0		2012IN1
18425	Mar 2 2005	MUDGE		2850	0		2012IN1
18426	Mar 2 2005	MUDGE		2850	0		2012IN1
18427	Mar 2 2005	MUDGE		2850	0		2012IN1
18428	Mar 2 2005	MUDGE		2850	0		2012IN1
18429	Mar 2 2005	MUDGE		2850	1 Mar 23 2012	Mar 23 2012	2012IN1
18430	Mar 2 2005	MUDGE		2850	1 Jun 8 2011	Jun 8 2011	2012IN1
18431	Mar 2 2005	MUDGE		2850	0		2012IN1
18567	Jul 19 2005	MUDGE		2850	1 Sep 5 2012	Sep 5 2012	2012B5
18568	Jul 19 2005	MUDGE		2850	0		2012B5

property_no	DT_PROPERTY_CREATED	ADDRESS_LOCALITY	postcode	#SALES	DT_FIRSTSALE	DT_LASTSALE	ZONING
21141	Apr 18 2011	MUDGE		2850	0		2012IN1
21142	Apr 18 2011	MUDGE		2850	0		2012IN1
21143	Apr 18 2011	MUDGE		2850	0		2012IN1
21563	Mar 14 2012	BURRUNDULLA		2850	1 Jan 10 2012	Jan 10 2012	2012IN1
21564	Mar 14 2012	BURRUNDULLA		2850	1 Jan 10 2012	Jan 10 2012	2012IN1
21577	Mar 16 2012	MUDGE		2850	0		2012B5
21578	Mar 16 2012	MUDGE		2850	0		2012B5
21655	May 15 2012	BURRUNDULLA		2850	1 Mar 20 2012	Mar 20 2012	2012IN1
21656	May 15 2012	BURRUNDULLA		2850	1 Jun 22 2012	Jun 22 2012	2012IN1

Appendix D

AHIMS search results - *Lots 16 & 17 DP756897 Hill End Road*

AHIMS Web Services (AWS) Search Result

Your Ref Number :
Client Service ID : 96468

Ben Rourke
4 / 108-110 Market St
MUDGEE New South Wales 2850
Attention: Ben Rourke
Email: brourke@barnson.com.au

Date: 28 March 2013

Dear Sir or Madam:

AHIMS Web Service search for the following area at Lot : 16. DP:DP756897 with a Buffer of 200 meters. conducted by Ben Rourke on 28 March 2013.

The context area of your search is shown in the map below. Please note that the map does not accurately display the exact boundaries of the search as defined in the paragraph above. The map is to be used for general reference purposes only.



A search of the Office of the Environment and Heritage AHIMS Web Services (Aboriginal Heritage Information Management System) has shown that:

0	Aboriginal sites are recorded in or near the above location.
0	Aboriginal places have been declared in or near the above location.*

AHIMS Web Services (AWS) Search Result

Your Ref Number :
Client Service ID : 96480

Ben Rourke
4 / 108-110 Market St
MUDGEE New South Wales 2850
Attention: Ben Rourke
Email: brourke@barnson.com.au

Date: 28 March 2013

Dear Sir or Madam:

AHIMS Web Service search for the following area at Lot : 17, DP:DP756897 with a Buffer of 200 meters, conducted by Ben Rourke on 28 March 2013.

The context area of your search is shown in the map below. Please note that the map does not accurately display the exact boundaries of the search as defined in the paragraph above. The map is to be used for general reference purposes only.



A search of the Office of the Environment and Heritage AHIMS Web Services (Aboriginal Heritage Information Management System) has shown that:

0 Aboriginal sites are recorded in or near the above location.
0 Aboriginal places have been declared in or near the above location. *